

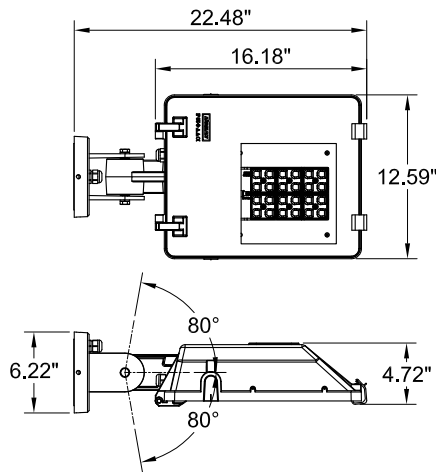
INSTALLATION AND SERVICE MANUAL



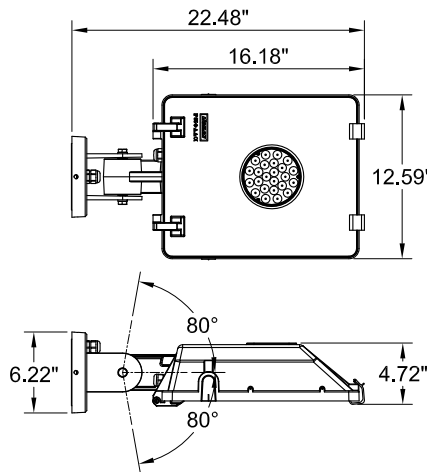
For installation of Gandalf 22 LED wall area light type II, III, IV, V luminaire.
Model. UGA-31911-31912, UGA-31921-31922, UGA-31931-31932, UGA-31991-31992.

Product drawing (dimensions)

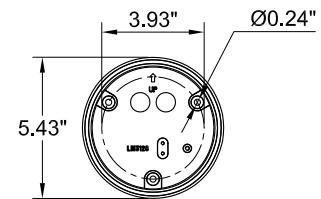
SUITABLE FOR WET LOCATIONS



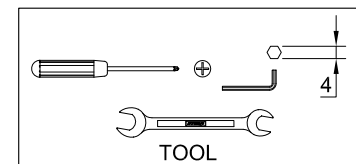
UGA-31911-UGA-31912
UGA-31921-UGA-31922
UGA-31931-UGA-31932



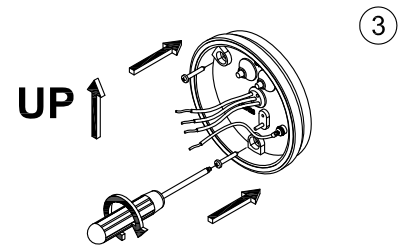
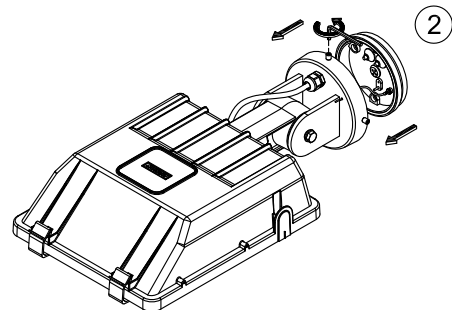
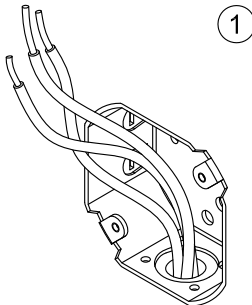
UGA-31991-UGA-31992



MOUNTING DETAIL

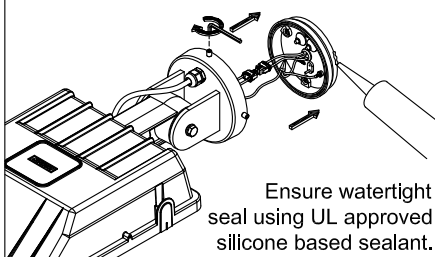


NOTE
Mounts over
a 3\"Octagonal
Junction box.

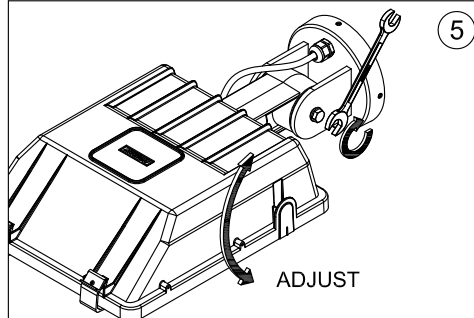


Center the Back Plate over the J Box
and Secure the back plate to the wall

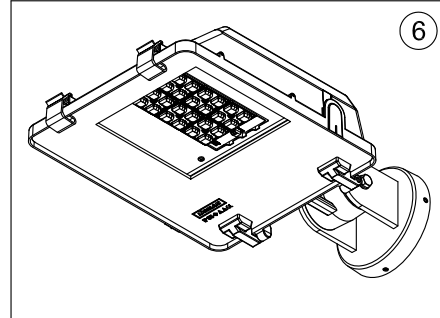
Connect Power and
Ground Wire.



Ensure watertight
seal using UL approved
silicone based sealant.



ADJUST



Notice to installer :

- 1.WIRING INSTRUCTIONS** Warning : RISK OF FIRE AND ELECTRICAL SHOCK. : FIXTURE MUST BE INSTALLED BY A QUALIFIED ELECTRICIAN ONLY>FIXTURE IS INTENDED FOR INSTALLATION IN ACCORDANCE WITH THE NATIONAL ELECTRICAL CODE, LOCAL AND FEDERAL CODE SPECIFICATIONS. DISCONNECT POWER BEFORE SERVICING.
- 2.This fixture has a VOLTAGE SPECIFIC BALLAST**,Check that the supply voltage is the same as the installed ballast voltage.

Ligman Lighting USA

7144 NW Progress Court, Hillsboro
Oregon, 97124, USA
Tel : 503 645 0500 | Fax : 503 645 8100

www.ligmanlightingusa.com

UGA-31911/20/08/14/REV.0

1/1



FM-TS-13/25-05-2007-REV.2